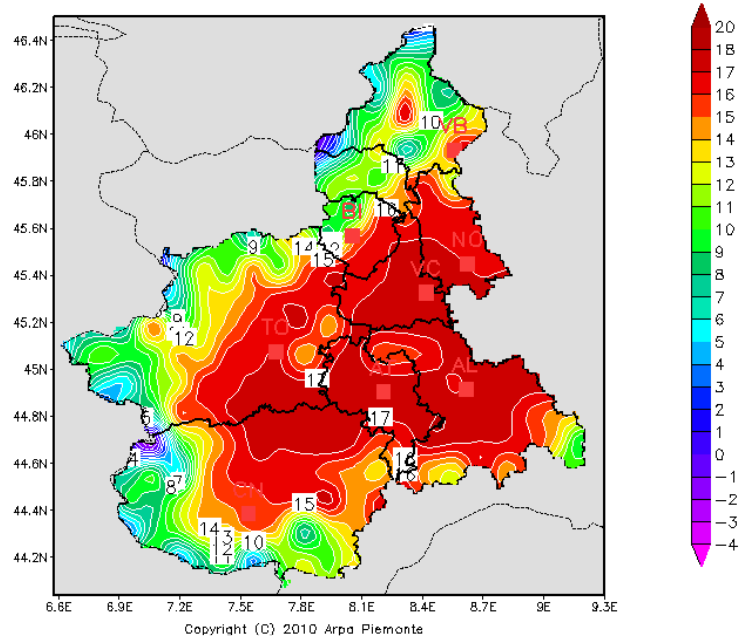


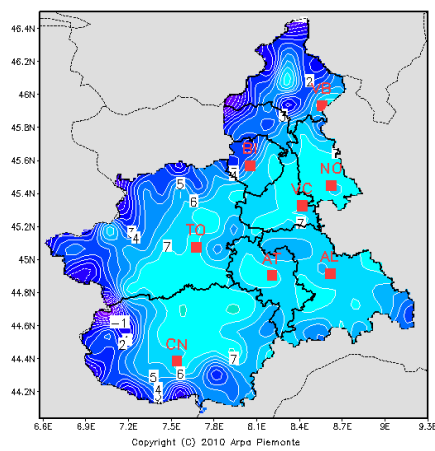
**TEMPERATURA MASSIMA: CLIMA di Riferimento 1971-2000**

Temperatura massima annua (°C) media 1971-2000

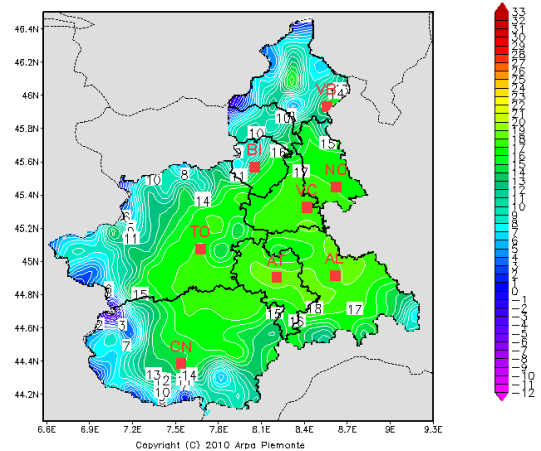


DJF: temperatura massima media (°C) 1971-2000

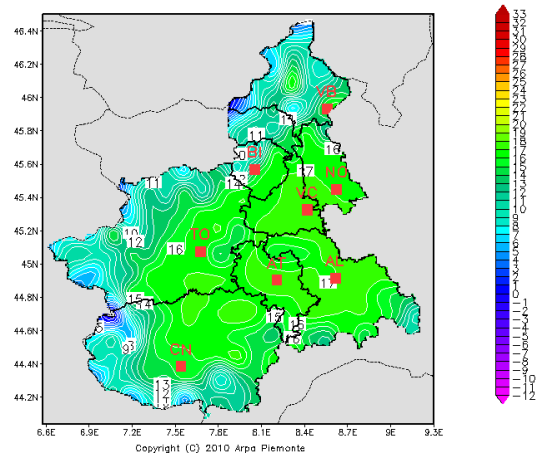
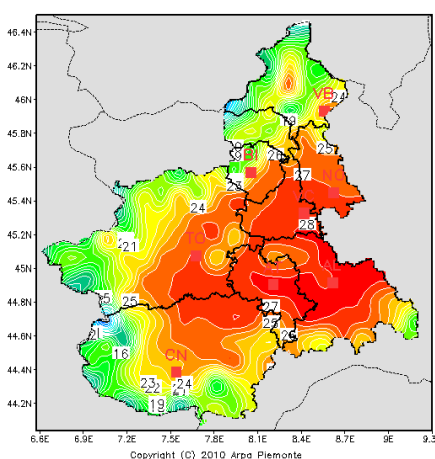
MAM: temperatura massima media (°C) 1971-2000



JJA: temperatura massima media (°C) 1971-2000

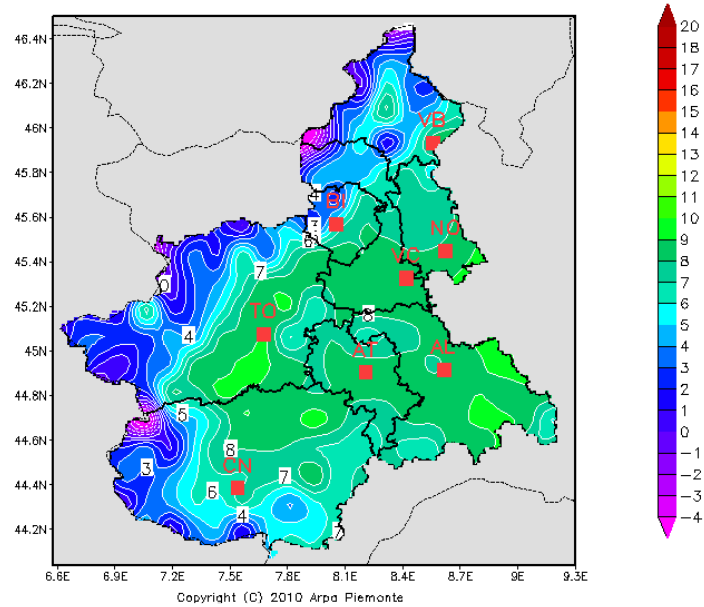


SON: temperatura massima media (°C) 1971-2000



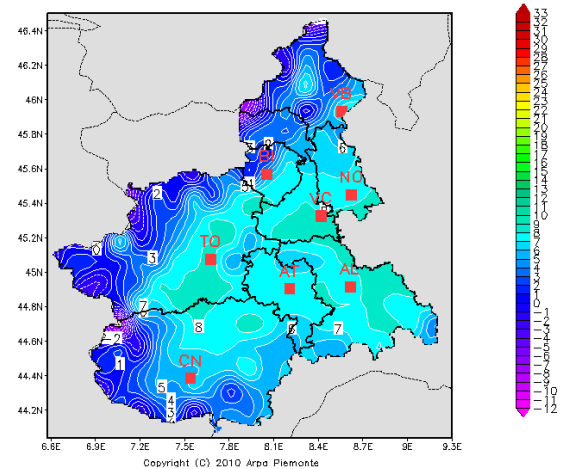
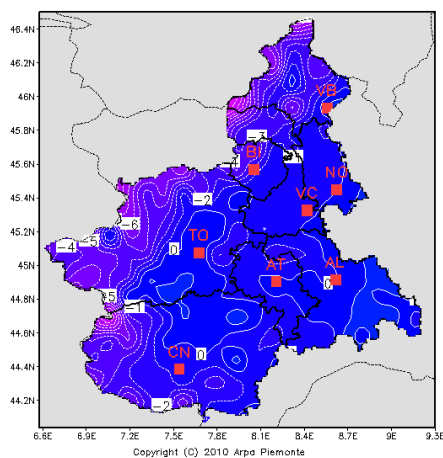
**TEMPERATURA MINIMA: CLIMA di Riferimento 1971-2000**

Temperatura minima annua (°C) media 1971-2000



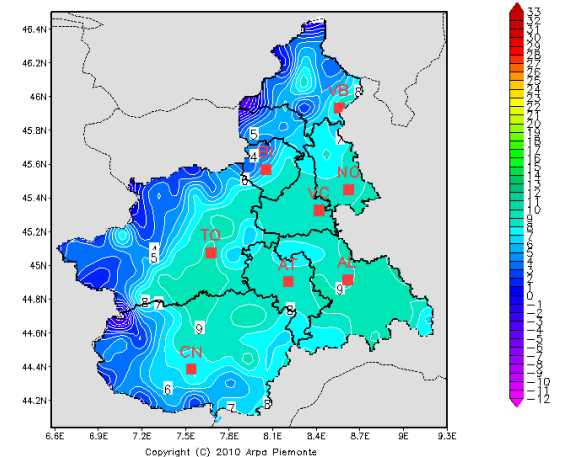
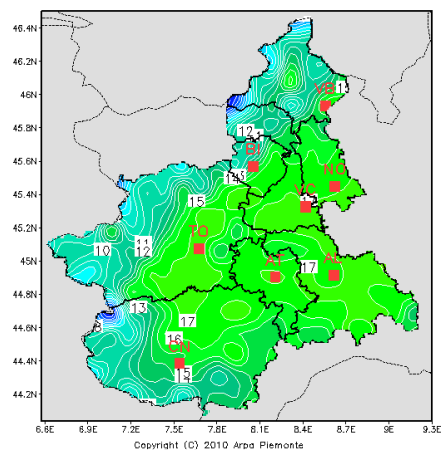
DJF: temperatura minima media (°C) 1971-2000

MAM: temperatura minima media (°C) 1971-2000



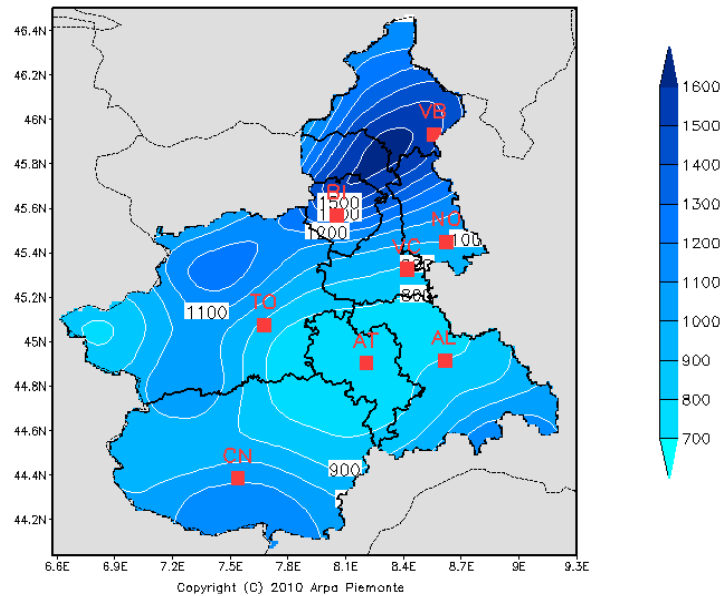
JJA: temperatura minima media (°C) 1971-2000

SON: temperatura minima media (°C) 1971-2000



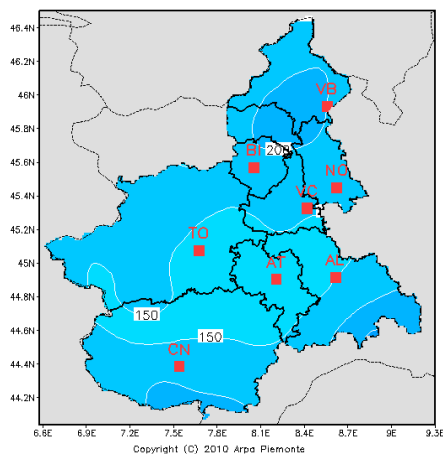
## PRECIPITAZIONE: CLIMA di Riferimento 1971-2000

Precipitazione cumulata annua (mm) media 1971-2000

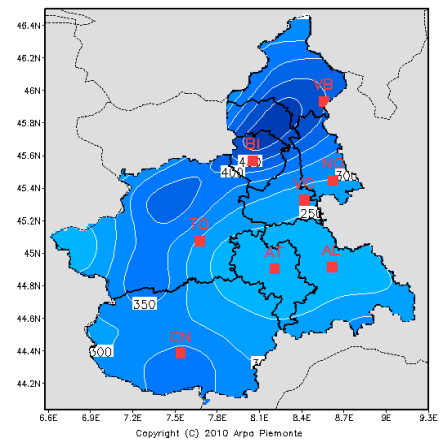


DJF: precipitazione cumulata (mm) media 1971-2000

MAM: precipitazione cumulata (mm) media 1971-2000



JJA: precipitazione cumulata (mm) media 1971-2000



SON: precipitazione cumulata (mm) media 1971-2000

